



TF210: TERRAFIRMA +2" PRO SPORT HEAVY LOAD SUSPENSION KIT

DEFENDER 90, DISCOVERY 1 & RANGE ROVER CLASSIC

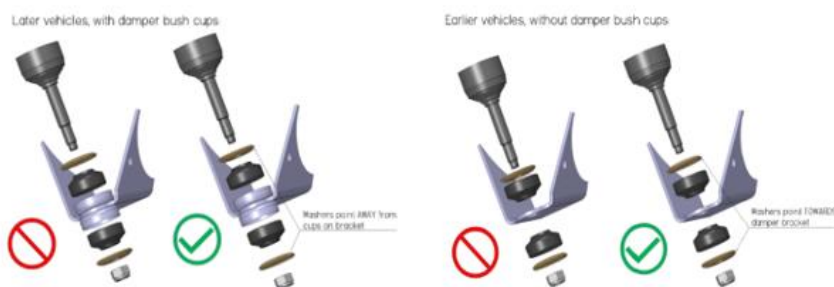
FITTING INSTRUCTIONS

1. Put the car into gear or park and apply the hand brake, loosen the front wheel nuts on one side, raise the vehicle on a trolley or bottle jack under the axle and then support the vehicle with an axle stand under the chassis. It's easier and safer to do this job one side at a time.
2. Remove the front wheel.
3. Remove the plastic cover on the inner wheel arch and expose the top of the turret.
4. Undo the nut on the bottom of the shock absorber remove all bushes and washers.
5. Undo the 4 nuts securing the shock absorber turret to the chassis bracket then Pull the turret and shock absorber out through the hole in the inner wing.
6. Undo the nut on the top of the shock absorber and then pull out of the turret removing all bushes and washers.
7. Fit the new shock absorber in through the turret, with the new washers and bushes in the correct order, then tighten the top nut.
8. Gently lower the axle on the jack, the axle will lower the spring away from the chassis and the spring will become loose. Once this happens stop lowering the axle. Take care not to stretch the brake lines.
9. Clean the spring plate on the axle and fit the new spring ensuring you use the correct spring for the side of the vehicle you are changing as the springs are normally handed.
10. Gently raise the axle back up using the jack and ensuring the spring relocates into the top chassis mount.
11. Fit the new shock absorber in through the turret, with the new washers and bushes in the correct order, then tighten the top nut.
12. Fit the upper bottom washers and bush, before pulling the lower part of the shock down through the spring seat. Then fit the lower bottom washers and bush and the securing nut, Tighten the bottom securing nut.
13. Drop the turret and shock absorber back through the hole in the inner wing, fit the washers and nuts and tighten down the turret onto the chassis bracket.
14. Refit the plastic inner wing cover.
15. Refit the wheel, lower the car off of the axle stand and torque the wheel nuts correctly.
16. Repeat the procedure on the other side.

WARRANTY & DISCLAIMER - Terrafirma products are warranted free from defects in materials and workmanship for a period of 12 months from the date of retail invoice. Terrafirma does not warrant that the products manufactured or marketed by it comply with the laws of the country where those goods are purchased or used. It is the sole responsibility of the purchaser to ascertain whether products being purchased, or the fitting of those products to any other object, comply with local laws. This warranty covers structural defect and workmanship but does not cover finishes, labour charges for removal or refitting, freight costs, accident damage, misuse or abuse, damage due to incorrect or improper fitment or application, modified product, faulty design or consequential damage of any kind. Damage or defects caused by collision, alteration, improper installation, road hazards, adverse conditions or usage for any other purpose other than normal private usage are not covered by this warranty. Terrafirma shall not be liable for any other claim relating to the use of the product and any indirect special or consequential damage or injury to any person, company or other entity. All claims must be accompanied by the original retail invoice and should be submitted to the supplying Allmakes 4x4/Terrafirma distributor. This warranty covers only the replacement of the product or part concerned. The decision remains solely at the discretion of Allmakes Ltd. The information contained in this catalogue was correct at the time of going to press. Allmakes/Terrafirma and its associated companies reserve the right to alter the range and any product specifications without notice. Always consult your Allmakes/Terrafirma distributor for the latest product information and specifications. The Terrafirma range of products is constantly being evaluated for enhancement and improvement to make sure the level of quality and performance is as expected.



17. Put the car into gear or park and apply the hand brake, loosen the rear wheel nuts on one side, raise the vehicle on a trolley or bottle jack under the axle and then support the vehicle with an axle stand under the chassis. It's easier and safer to do this job one side at a time.
18. Remove the rear wheel
19. Undo the nut on the bottom of the shock absorber remove all bushes and washers.
20. Undo the nut on the top shock absorber chassis mount and then pull the shock absorber off of the mounting removing all bushes and washers.
21. Undo the 2 bolts which hold the spring retaining plate in place.
22. Gently lower the axle on the jack, the axle will lower the spring away from the chassis and the spring will become loose. Once this happens stop lowering the axle and remove the old spring
23. Clean the spring seat and retaining plate, fit the new spring, ensuring you use the correct spring for the side of the vehicle you are changing as the springs are normally handed.
24. Refit the spring retaining plate tighten the bolts making sure the retaining plate is holding the spring tightly in place.
25. Gently raise the axle back up using the jack and ensuring the spring relocates into the top chassis mount.
26. Fit the new shock over the top chassis mounting, with the new washers and bushes in the correct order and the correct way around, the convex side of the curved washers must be against the rubber bush, and then tighten the top nut.
27. Fit the upper bottom washers and bush, before pulling the lower part of the shock absorber down through the axle mounting bracket *. Then fit the lower bottom washers and bush and the securing nut, Tighten the bottom securing nut.
28. Refit the wheel, lower the car off of the axle stand and torque the wheel nuts correctly.
29. Repeat the procedure on the other side.



- *NOTE – For long travel (+2" and longer) shocks it is an advantage to remove the metal bush cups found on post 1994 Defenders and Discovery rear axles, this will allow unrestricted movement of the lower shock mount.
- Allowing the shock bush washers to contact the metal bush cup can cause premature shock failure.

WARRANTY & DISCLAIMER - Terrafirma products are warranted free from defects in materials and workmanship for a period of 12 months from the date of retail invoice. Terrafirma does not warrant that the products manufactured or marketed by it comply with the laws of the country where those goods are purchased or used. It is the sole responsibility of the purchaser to ascertain whether products being purchased, or the fitting of those products to any other object, comply with local laws. This warranty covers structural defect and workmanship but does not cover finishes, labour charges for removal or refitting, freight costs, accident damage, misuse or abuse, damage due to incorrect or improper fitment or application, modified product, faulty design or consequential damage of any kind. Damage or defects caused by collision, alteration, improper installation, road hazards, adverse conditions or usage for any other purpose other than normal private usage are not covered by this warranty. Terrafirma shall not be liable for any other claim relating to the use of the product and any indirect special or consequential damage or injury to any person, company or other entity. All claims must be accompanied by the original retail invoice and should be submitted to the supplying Allmakes 4x4/Terrafirma distributor. This warranty covers only the replacement of the product or part concerned. The decision remains solely at the discretion of Allmakes Ltd. The information contained in this catalogue was correct at the time of going to press. Allmakes/Terrafirma and its associated companies reserve the right to alter the range and any product specifications without notice. Always consult your Allmakes/Terrafirma distributor for the latest product information and specifications. The Terrafirma range of products is constantly being evaluated for enhancement and improvement to make sure the level of quality and performance is as expected.