



TF841LB: TERRAFIRMA STEERING GUARD

DEFENDER 90 / 110 / 130 – LEFT HAND DRIVE

FITTING INSTRUCTIONS

Remove the steering damper from the chassis end mount.

Offer the two side arms of the steering guard up to the chassis rails. The arm with the large round cut out is for the steering damper to pass through.

The arm with the cut out for the steering drop arm is for the side nearest to the steering box.

Bolt the arms to the inside of the chassis rails using the bolt holes for the lashing eyes, one of the bolts that secures the steering box and the spare hole in the chassis rail.

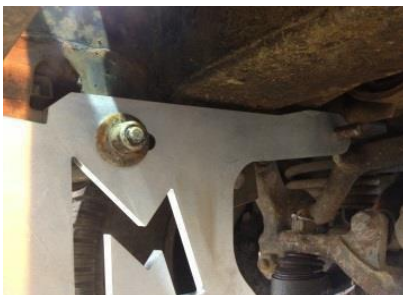


Pass the steering damper through the hole and re-bolt to the chassis.

Offer up the front guard to the two side brackets and bolt together but do not tighten yet. Ensure that the guard is square and level; when you are happy fully tighten all bolts.



Please note that there is only 1 x M10 x 110mm bolt in the fitting kit. There's a long bolt on the driver's side of the vehicle that secures the steering box bracket to the chassis, this is the bolt that secures the steering guard mounting arms to the chassis, the long bolt in the fitting kit does the same job on the passenger side.



WARRANTY & DISCLAIMER - Terrafirma products are warranted free from defects in materials and workmanship for a period of 12 months from the date of retail invoice. Terrafirma does not warrant that the products manufactured or marketed by it comply with the laws of the country where those goods are purchased or used. It is the sole responsibility of the purchaser to ascertain whether products being purchased, or the fitting of those products to any other object, comply with local laws. This warranty covers structural defect and workmanship but does not cover finishes, labour charges for removal or refitting, freight costs, accident damage, misuse or abuse, damage due to incorrect or improper fitment or application, modified product, faulty design or consequential damage of any kind. Damage or defects caused by collision, alteration, improper installation, road hazards, adverse conditions or usage for any other purpose other than normal private usage are not covered by this warranty. Terrafirma shall not be liable for any other claim relating to the use of the product and any indirect special or consequential damage or injury to any person, company or other entity. All claims must be accompanied by the original retail invoice and should be submitted to the supplying Allmakes 4x4/Terrafirma distributor. This warranty covers only the replacement of the product or part concerned. The decision remains solely at the discretion of Allmakes Ltd. The information contained in this catalogue was correct at the time of going to press. Allmakes/Terrafirma and its associated companies reserve the right to alter the range and any product specifications without notice. Always consult your Allmakes/Terrafirma distributor for the latest product information and specifications. The Terrafirma range of products is constantly being evaluated for enhancement and improvement to make sure the level of quality and performance is as expected.

**TF841LB
90 / 110 / 130**